

A*Crew

AI* agent

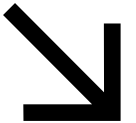
Effective, Efficient and Safe way to bring AI to your company

Chris Shum
Founder & CEO

chris@geniiai.com

“ 73% of companies are prioritising AI over other digital investments. Generative AI is the most frequently deployed AI solution in organizations.”

Garner, Accenture 2024





Statista.com

"The market size in the Generative AI market is projected to reach US\$62.72bn in 2025 and expected to reach US\$356.05bn by 2030 with annual growth rate 41.52%"

Table of contents

Problem

01



Solution

02



Forecast

03



Evidence

04

1. Information Overload
2. Inefficient Workflows
3. Communication Barriers and Team Collaboration Issues
4. Lack of Access to Expert Support
5. Data Security and Compliance Concerns
6. Lack of Visual Performance Management

"Businesses Falling Behind in Adopting AI Tools"
Gartner 2025

Problem In Traditional Office

Table of contents



Problem

01

Product

02



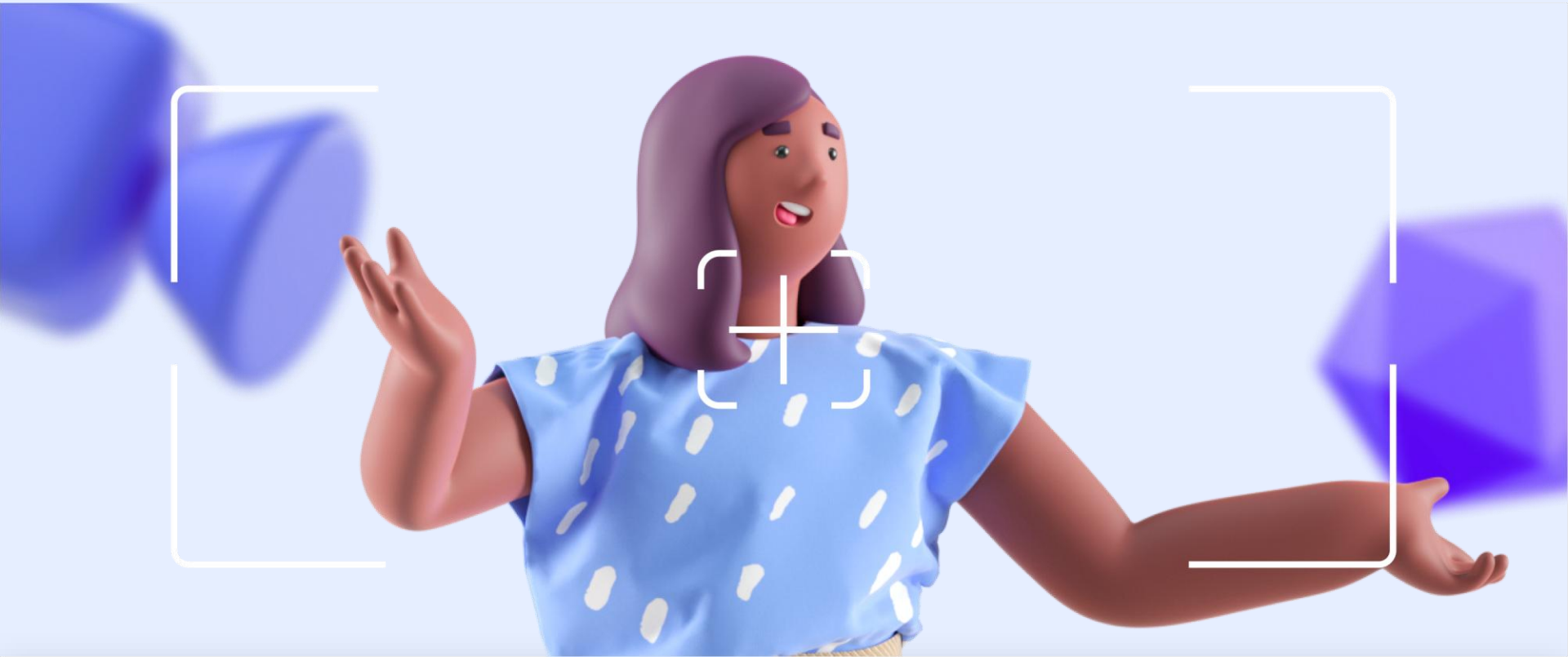
Forecast

03

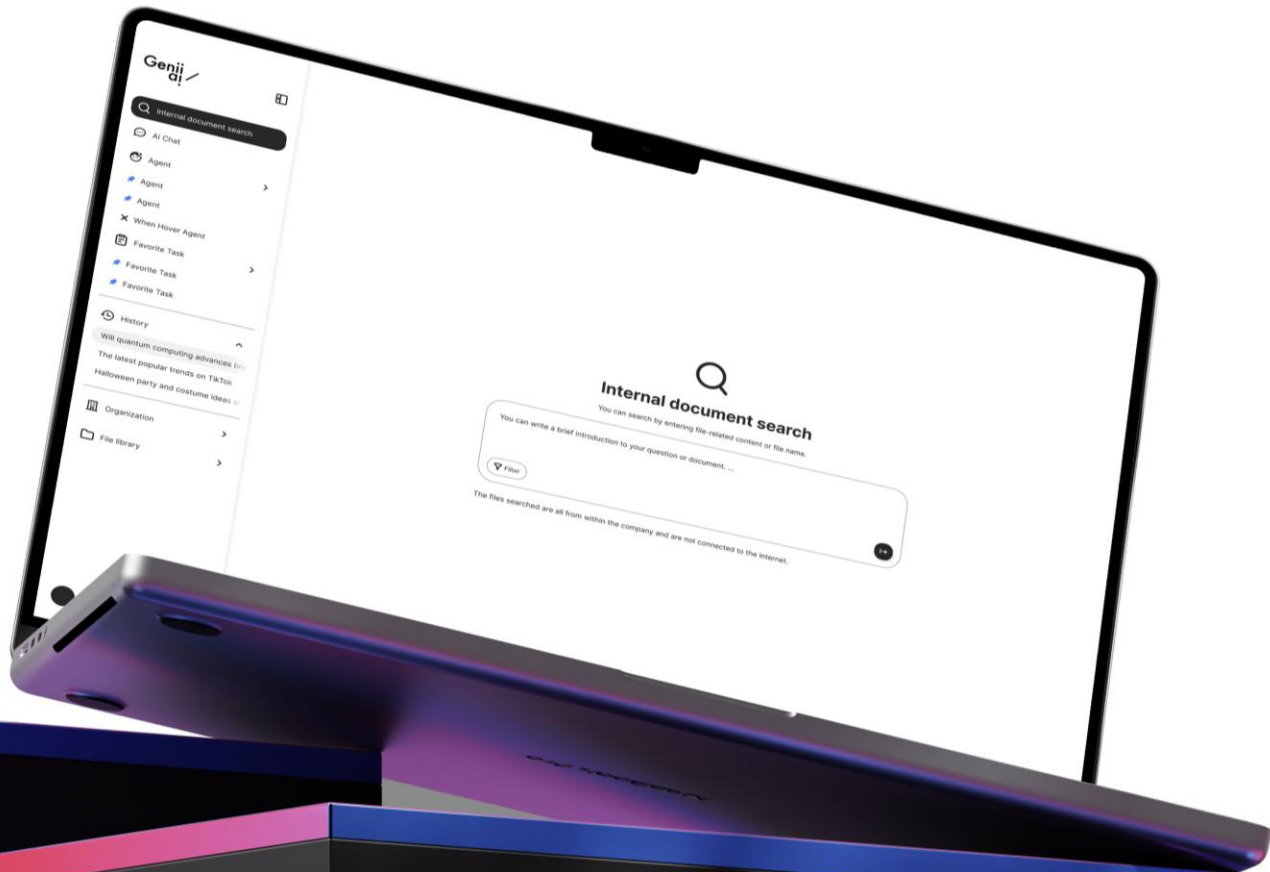


Evidence

04



GeniiAI Office Assistant delivers a comprehensive solution that addresses multiple pain points faced by modern enterprises, fulfilling market needs while enhancing efficiency, optimizing collaboration, and strengthening security—ultimately driving business success and growth.





GeniiAI is the perfect product

It is an enterprise graded AI platform empowered by
Large Language model (LLM) to handle daily corporate operations

Large Language Model AI

Comes with a variety of cutting-edge AI models in different sizes, performance levels, and capabilities, tailored to meet the needs of various industries.

Google Gemme

Chat GPT

Deepseek

Meta Llama

Mistral

Qwen

Claude

Google Gemini



Company Intelligence

Effortlessly search documents, ask questions, and extract insights from the [internal company file database](#) while building a comprehensive company knowledge database.

A*Crew A.I. Agent Office Services

A list of AI assistant professionals specializing in various aspects of office operations.



Key Features for GeniiAI – A*Crews



- **Key Feature 1 - Diverse AI Models**

Access a range of cutting-edge AI models in various sizes and capabilities, tailored to meet diverse industry needs.

- **Key Feature 2 - Company Intelligence**

Effortlessly search your company's document database to extract insights and build a knowledge repository, turning information into actionable intelligence.

- **Key Feature 3 - AI Agent Network**

Gain access to a network of specialized AI assistants across HR, Finance, Marketing, Sales, and IT, providing tailored expert advice and support.

- **Key Feature 4 - Workflow Automation**

Streamline processes with automated workflows that reduce manual input, allowing your team to focus on strategic initiatives.

Key Features for GeniiAI – A*Crews



- **Key Feature 5 - Real-Time Collaboration**

Enhance teamwork with tools that enable seamless project collaboration, sharing updates, and synchronized efforts across departments.

- **Key Feature 6 - Personalized Dashboards**

Customize dashboards to track KPIs, project statuses, and individual performance metrics, making data-driven decision-making easier.

- **Key Feature 7 - Enhanced Security and Compliance**

Store all data on-premise for improved safety and regulatory compliance, ensuring your sensitive information is secure and under your control.



Why A*crew?

Multi large language model to choose


A*Crew allows you to choose major LLM models on the market to help you to solve problem, including Google Gemma, Deepseek, Meta Llama, Mistral, Alibaba Qwen and many more for seeking information, helping to make decisions, research, make reports, generate documents and much more.

Privacy? No worry. Every single document is in your on-premise data center

GeniiAI is an on-premise AI machine. Staff can create company's unique knowledge center by uploading document and company's data files. GeniiAI provide rapid AI search for documents. Staff can get their answers in seconds. It is a center for company to share knowledges across different departments.

Hundreds of A*crew AI agent are ready to use

A*Crew is a team of AI assistants to help you in many daily operations. AI crew members including HR, Marketing, Sales, Admin, Supporting, Legal, technology support, customer success and more, helping you from creating jobs post, marketing planning, research analysis, to handle tender documents and more.



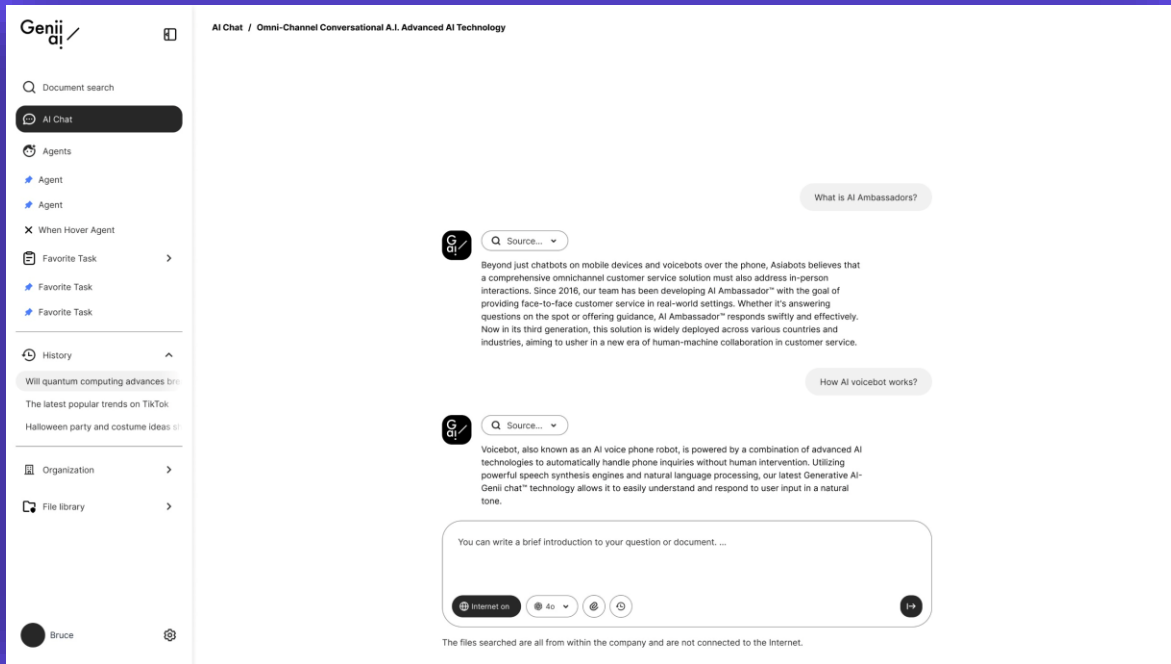
Ask Anything !

Generative AI plays an essential role in
Everyday Operations:

- Content Creation
- Document Editing & Improvement
- PPT ideas Generation
- Language Translation
- Research & Study Assistance
- Result Simulation
- Document Summarization
- Graphic Creation
- Coding & Debugging
- More ...

What's more?

"with private AI engine,
No need to worry that every search will
leak your private information !"



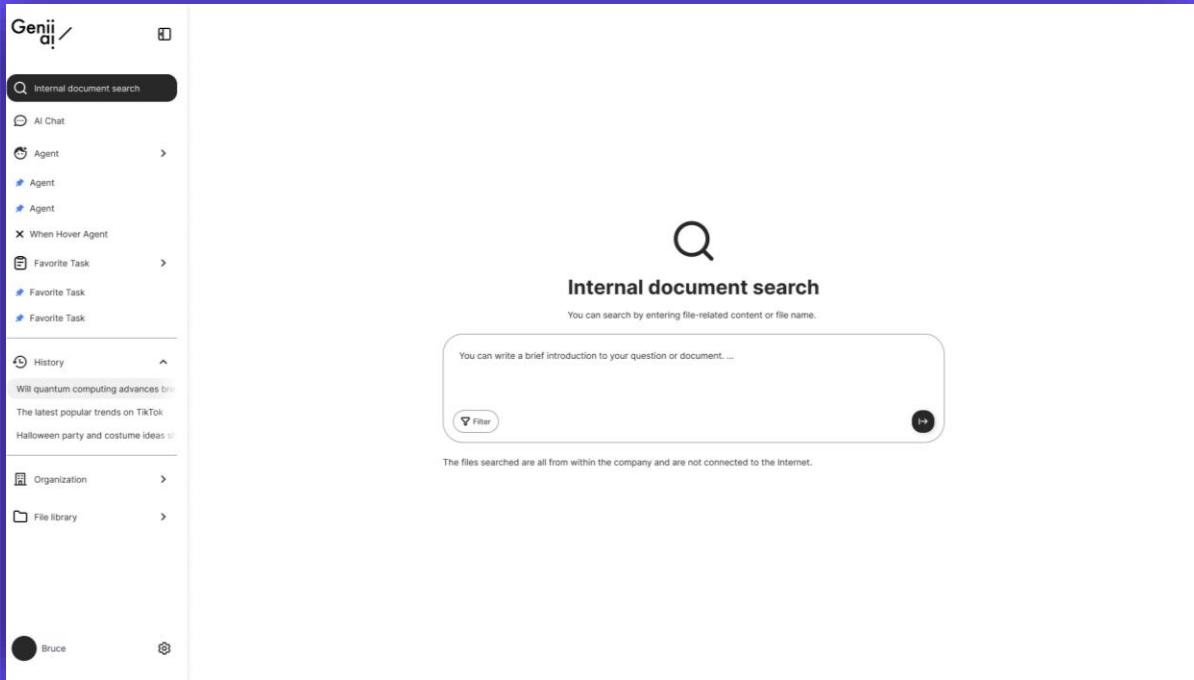
Search everything !

GeniiAI is an incredibly useful AI tool designed to assist you in searching the shared corporate database efficiently.

- Effortlessly search for files and information at lightning speed with source citations
- collaborate seamlessly with colleagues
- Share corporate information across departments.
- Gain valuable insights from data, conduct research,
- Perform generative information retrieval across various databases with ease.

What's more?

"Every staff is helping to build a corporate data base day by day! "



Oh my god, they help !

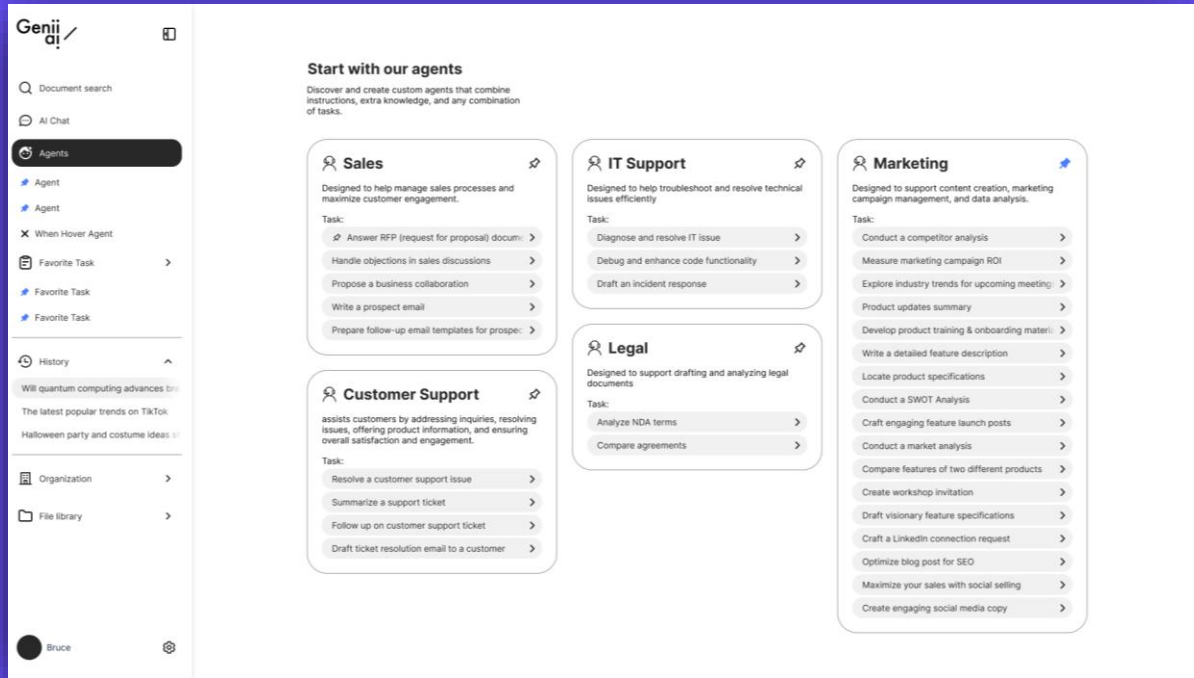
Genii AI A*crew is a dedicated team of AI experts ready to assist you with your daily office operations.

Team member in the first batch:

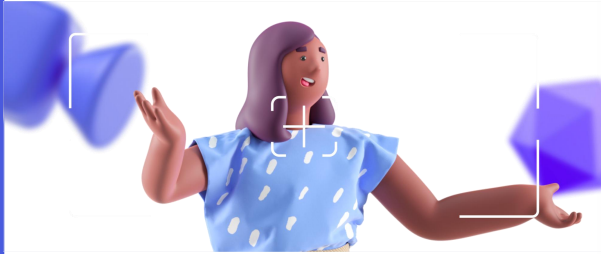
- AI sales agent crew
- AI marketing agent crew
- AI Customer success agent crew
- AI IT technical support agent crew
- AI HR agent crew
- AI legal assistant agent crew
- AI finance agent crew
- AI office admin agent crew
- AI product expert agent crew
- AI customer support agent crew
- more

What's more?

"We provide service in creating a tailored agent for you!"

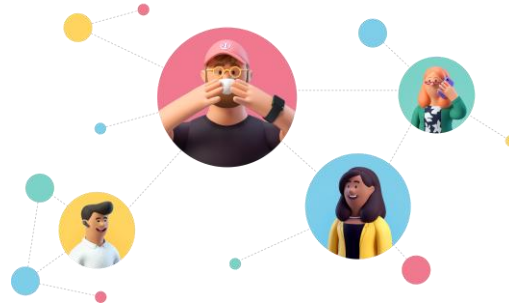


More reasons to have it...



Multi-talent your team

AI empowers staff to become multi-talented, significantly improving effectiveness and efficiency, maximizing productivity, boosting sales, and lowering costs.



Inherit precious company knowledge

Valuable company knowledge won't be lost when employees leave. A highly user-friendly knowledge base to facilitate sharing and learning within the organization.



Get ready for full AI automation

By integrating with various services like Salesforce, CRM systems, accounting software, and workflow management tools, MCP is creating a fully functional AI automation agent.

GeniiAI PTE. LTD.

A*Crew

AI agent

Effectivest and safest way to bring AI to your company

Chris Shum

Founder & CEO

admin@geniiai.co